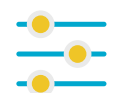


AC1200 Whole Home Mesh Wi-Fi System

M1200



MU-MIMO



Qos



Parental Control



Guest Network

Mesh is a “System” rather than a Product

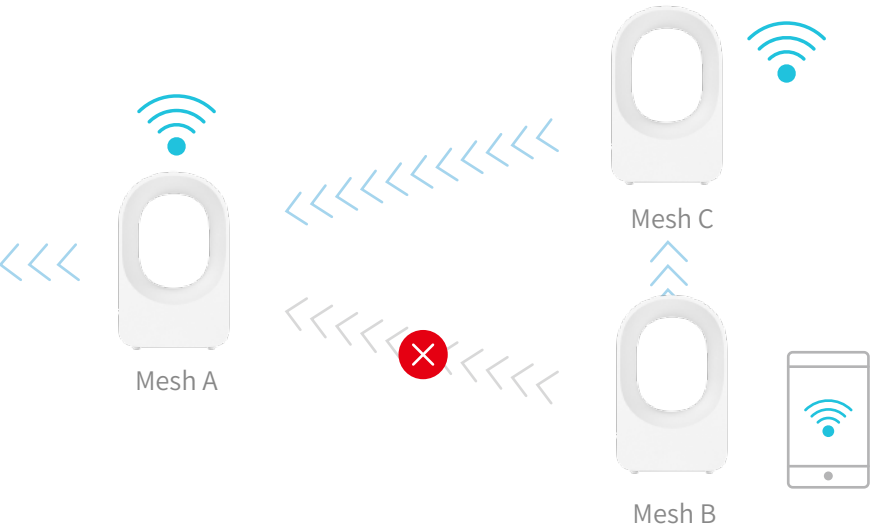
Intelligent Routing between Different Nodes

In a mesh system, a mesh unit can always detect and select the optimal routing from other available mesh units automatically. This, on one hand, ensures outstanding network performance; on the other hand, guarantees the stability of your network.

Mesh Routing Optimization

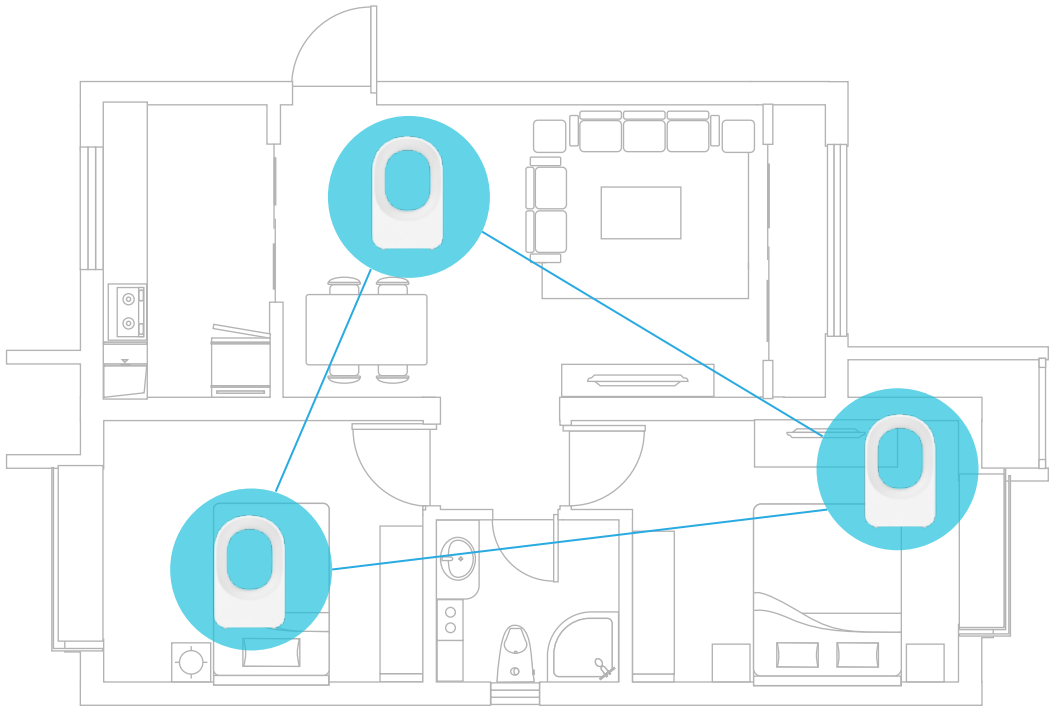


Switch Routing when Connection is Lost



Add More Units to Expand Coverage

Expanding network coverage in a mesh system is much easier than using the traditional combination of “router + extenders”. Simply add one more mesh unit to the system to boost your Wi-Fi coverage.





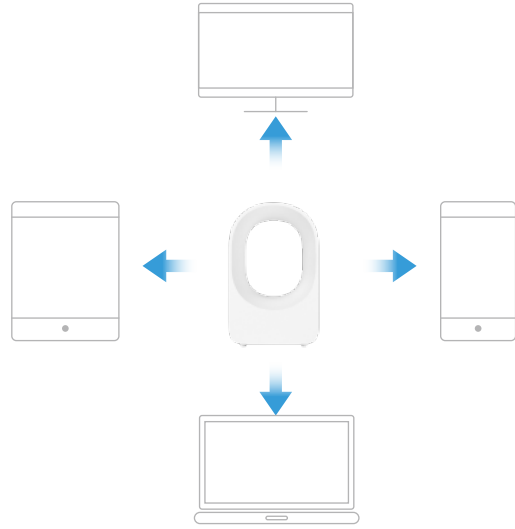
Full Gigabit Ports

Gigabit Ethernet ports transfer data 10x faster than standard Fast Ethernet ports. This ensure you enjoy the full speed of 802.11AC Wi-Fi.



MU-MIMO

MU-MIMO technology enables the mesh to communicate multiple devices simultaneously, effectively improve network communication efficiency.



Beamforming

Beamforming makes it possible to send directional signal. It promises a faster, stronger Wi-Fi signal with longer range for each device.



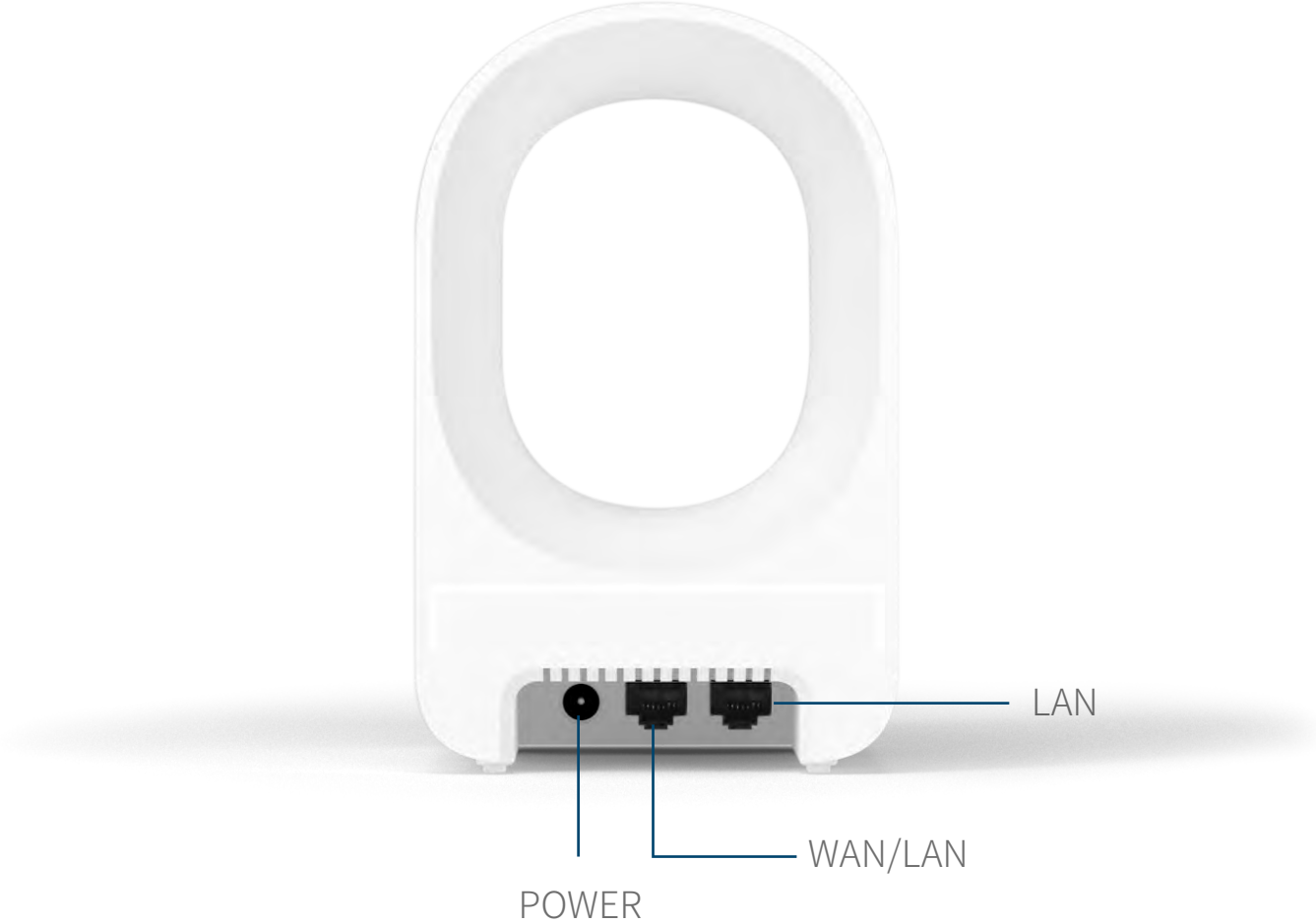
Specifications

General

- Wireless Standards: IEEE802.11a/n/ac, 5GHz, IEEE802.11b/g/n, 2.4GHz
- Signal Rate: 5GHz:Up to 867Mbps, 2.4GHz:Up to 300Mbps
- Operation Frequency: 2.4GHz & 5GHz
- Reception Sensitivity:
5GHz
11a 6Mbps: -96dBm, 11a 54Mbps: -79dBm
11ac HT20: -71dBm, 11ac HT40: -66dBm, 11ac HT80: -63dBm,
11n HT20: -72dBm, 11n HT40: -71dBm
2.4GHz
11g 54M: -77dBm
11n HT20: -74dBm, 11n HT40: -72dBm
- Wireless Security: WPA2-PSK(default)
- Wireless roaming: Comply with IEEE802.11k/v/r

Hardware

- Ethernet Standards: IEEE802.3, IEEE802.3u
- Interface: 1 Gigabit Ethernet WAN/LAN port, 1 Gigabit Ethernet LAN port
- Antenna: 2*5dBi dual band antennas
- Button: 1 reset button
- Power:
Input: 100-240V—50/60Hz, 0.6A , Output: DC 12V==1.5A
- Dimensions: 165 x 105 x 100mm



Specifications

Software Features

- Internet Connection Type: Dynamic IP/Static IP/PPPoE
- DHCP: Server, Client, DHCP Client List
- Quality of Service: WMM, Bandwidth Control
- Port Forwarding: Virtual Server, UPnP
- VPN Pass-Through: PPTP, L2TP, IPSec
- Access Control: Parental Control, Guest Network
- Firewall Security: Forbid UDP flood attack, Forbid TCP flood attack, Forbid ICMP flood attack
- Internet Protocol: IPv4
- Setup Requirements: Supports Web UI

Environment

- Operating Temperature: 0°C~40°C (32°F~104°F)
- Storage Temperature: -40°C~70°C (-40°F~158°F)
- Relative Humidity: 10%~90%, non-condensing
- Storage Humidity: 5%~90%, non-condensing

Package Contents

- M1200
- Power Adapter
- Quick installation guide
- Gigabit ethernet cable